

UNDERGROUND AUTOMATION FOR SWING GATES

HLXCORE

UNDERGROUND AUTOMATION



100

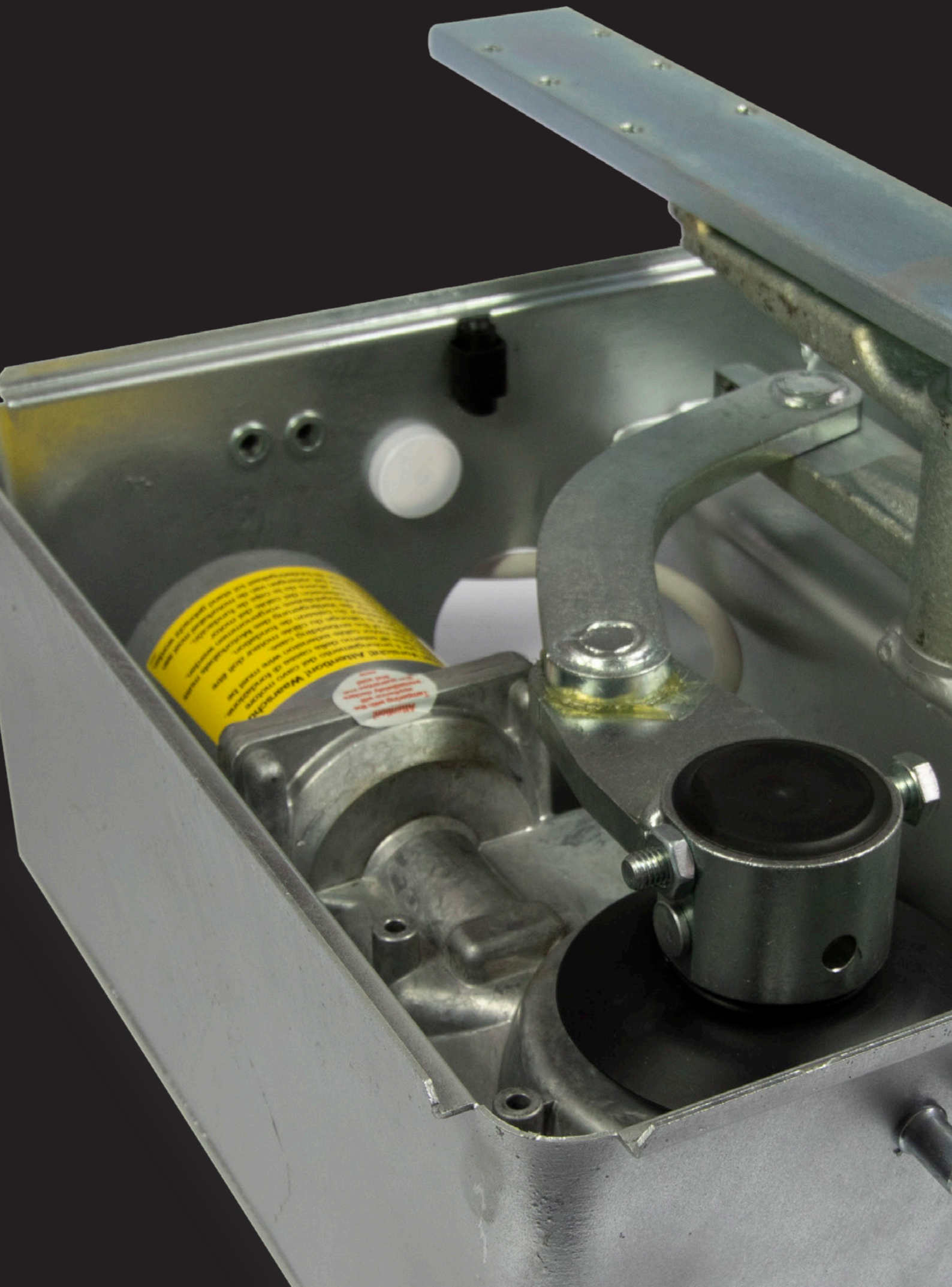
CARDIN KIT HL

UNDERGROUND AUTOMATION



105







UNDERGROUND AUTOMATION FOR SWING GATES



CARDIN XCORE SERIES HL

The automation is made up of a series of components consisting of an electronic programmer, one or two sealed self-locking operators complete with embedding cases and a special connecting cable. The robust and reliable electromechanical operator guarantees optimum performance under all working conditions and its system of ball bearing balanced pivoting levers guarantees regular and silent running.

The hot dip galvanized or stainless steel embedding cases are guaranteed to remain rust free throughout time.

Particularly suited for installations that do not allow column installations or where the automation has to be completely hidden.

The units do not feature on board electronics and we advise you to use a Cardin electronic programmer:

- PRG230M2 - T600 for 1 or 2 230V motors;
- CC242ETOPCB - CC242EXTOPCB for 1 or 2 24V motors;

On the 24V model gate position is encoder controlled and self-programming thus reducing installation times to a minimum and optimising the programming procedure. Repositioning takes place automatically whenever foreign objects get in the way of the gate as it is moving.

The electronic control unit is completed by the anti-crush and "soft start" and "soft stop" functions. The control electronics also comes complete with a display that monitors the programming stages and counts the number of manoeuvres carried out by the machine.

The irreversible reduction system guarantees the blocking of the gate in the closed position.

The manual emergency movement system is easy to operate using a personalised "locking-unlocking" key and rearming is automatic.



WATERTIGHT MOTOR IP67



STAINLESS STEEL OR HOT DIP
GALVANIZED EMBEDDING CASE



ROTATION THROUGH 360°



PIVOTING ON BEARINGS



SELF-PROGRAMMING MONITORED BY
AN LCD GRAPHICS DISPLAY
CC242ETOPCB - CC242EXTOPCB



CARDIN XCORE SERIES HL

ELECTROMECHANICAL OPERATOR WITH A 24V MOTOR FOR GATES WITH A 110° MAXIMUM OPENING ANGLE (360° WITH ACCHLXCORE360)

Encoder controlled self-locking operator:

- fitted with a crank rod transmission system;
- embedding case, Cardin electronic programmer and connection cable to be ordered separately.



HLXCORE24



ELECTROMECHANICAL OPERATOR WITH A 230V MOTOR FOR GATES WITH A 110° MAXIMUM OPENING ANGLE (360° WITH ACCHLXCORE360)

Self-locking operator:

- fitted with a crank rod transmission system;
- supplied with a 6m connection cable;
- embedding case and Cardin electronic programmer to be ordered separately.



HLXCORE230



EMBEDDING CASES

complete with connection lever and adjustable mechanical travel limits.

HLBOX - Hot dip galvanized anti-rust treatment, manual release mechanism to be ordered separately. Factory fitted with a hot dip galvanized steel cover.

HLBOX



HLBOXI - Structure completely in stainless steel, manual release mechanism to be ordered separately. Factory fitted with a stainless steel cover.

HLBOXI



HLBOXC - Hot dip galvanized anti-rust treatment, release mechanism with a personalised key included in the embedding case lever unit. Factory fitted with a hot dip galvanized steel cover. Not compatible with ACCHLXCORE360.

HLBOXC



STAINLESS STEEL COVER FOR EMBEDDING CASES

HLBOXCAI



CARDIN XCORE SERIES HL



MANUAL RELEASE MECHANISM

with a personalised key for HLBOX-HLBOXI

SBLHL



MANUAL RELEASE MECHANISM

activated by means of a lever for HLBOX-HLBOXI

SBLSHL



MECHANICAL GATE LOCK

for installations with two gates and a horizontal electric lock.

BLA



ACCESSORY FOR 360° OPENING

with pinion and chain. Not compatible with HLBOXC.

ACCHLXCORE360



ACCESSORY FOR 360° OPENING

with pinion and chain for HLBOXC.

ACCHLXCORE360C



SELF-PROGRAMMING ECU FOR HLXCORE24

Programmer for the control of two encoder controlled 24V motors. Fitted with a multi-decoding module S449-S486-S504-S508.

Compatible with the INTPRG-3G/WF system that allows the monitoring and programming of system parameters from remote positions.



Compatible with the data exchange system between digital devices (smartphone, tablet, etc.) and the Cardin multifunctional control units.



See section 24V ECU INTERFACE DEVICES on page 178

ELECTRONIC PROGRAMMER

CC242ETOP



ECU, BATTERY CHARGER AND NiMH BATTERIES

CC242ETOPCB

ECU, BATTERY CHARGER AND NiMH BATTERIES

CC242EXTOPCB



KIT BATTERY CHARGER + NiMH BATTERIES

Allows the CC242ETOP unit to work during blackouts.

KBNiMH-1



For the electric locks see page 159.



CARDIN XCORE SERIES HL

ELECTRONIC PROGRAMMER

for one or two 24V encoder-controlled motors complete with speed regulation (with ECU) and deceleration. Factory set for the insertion of an open collector receiver card.

KIT BATTERY CHARGER + NiMH BATTERIES

Allows the 24V programmers to work during blackouts.

POWER SUPPLY KIT

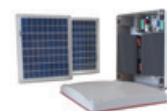
Solar panels for use with all 24Vdc automation.

10m CABLE

with end sleeves for HLXCORE24.

T624

KBNIMH-T1

SUNPOWER

CABPC10


ELECTRONIC PROGRAMMER FOR HLXCORE230

for one or two 230V encoder-controlled motors complete with torque adjustment and deceleration. Factory set for the insertion of an open collector receiver card.

SELF-PROGRAMMING ECU FOR HLXCORE230

Programmer for the control of two motors.

Motor power supply 230Vac.

Maximum power yield for two motors 470 + 470 W.

The appliance is fitted with an interface for the insertion of a standard Cardin radio receiver card. For more information turn to page 174.

T600

PRG230M2

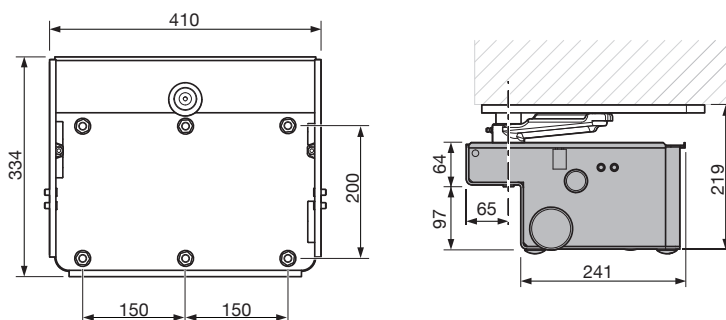

CARDIN XCORE SERIES HL



OPERATOR SPECIFICATIONS

Motor power supply	V	HLXCORE24	24Vdc	HLXCORE230	230Vac
Electrical input	A		2		1,9
Power input	W		60		470
Duty cycle	%		70		20
Opening time 90°	s		22		19,5
Opening time 110°	s		27		25
Opening time 180°	s		44		35
Maximum torque	Nm		400		290
Nominal torque	Nm		270		-
Protection grade	IP		67		67

OVERALL DIMENSIONS

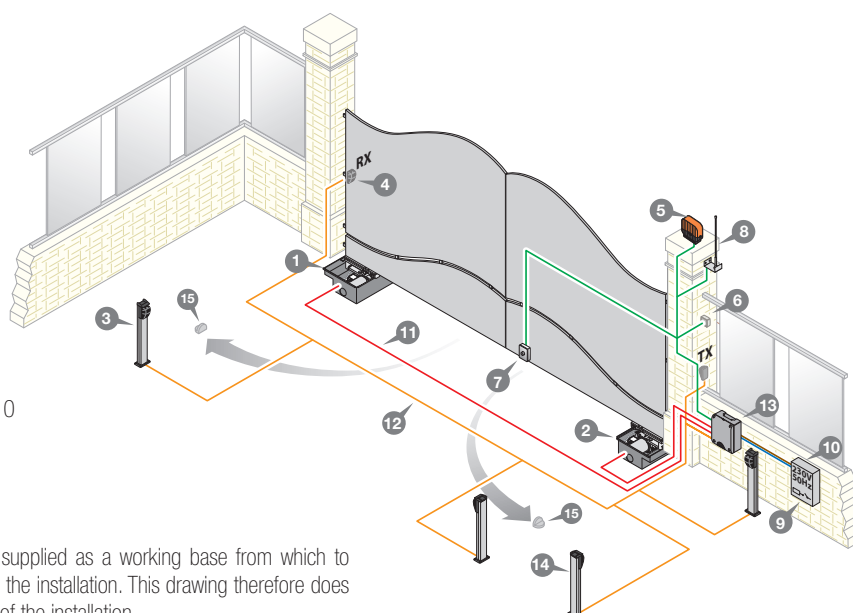


HLXCORE24 - HLXCORE230

INSTALLATION EXAMPLE

LEGEND

- 1 Geared motor (left)
- 2 Geared motor (right)
- 3 Internal photocells
- 4 External photocells
- 5 Warning lights
- 6 Mechanical selector switch
- 7 Electric lock
- 8 External aerial
- 9 All pole circuit breaker
- 10 Mains cable 230Vac
- 11 Channelling for Cardin connection cable CABPC10
- 12 Channelling route for low voltage wires
- 13 Electronic programmer
- 14 Lateral protective photocells
- 15 Opening direction stop buffers



Attention: The drawing is purely indicative and is supplied as a working base from which to choose the Cardin electronic components making up the installation. This drawing therefore does not lay down any obligations regarding the execution of the installation.



COMPLETE UNDERGROUND AUTOMATION KIT FOR SWING GATES



KT-HLXCORE24CC



PACKING
DIMENSIONS: 400 x 400 x 600
GROSS WEIGHT: 62,9 kg
ITEMS PER PALLET: 5 pcs

USE

Particularly suited for installation that do not allow column installations or where the automation has to be completely hidden. For gates with a maximum length of **3m**, maximum weight **350kg**.



2 SELF-LOCKING ELECTROMECHANICAL GEARED MOTORS

with an encoder-controlled 24V motor.

HLXCORE24



ELECTRONIC PROGRAMMER

with a 433MHz FM receiver, battery charger and NiMH batteries, housed in an IP55 box with sealing gaskets and cable gland entry holes for the insertion of one Ø21 mm and two Ø16mm rigid tubes.
See page 168.

CC242EXTOPCB



2 4-CHANNEL TRANSMITTERS

433MHz FM ROLLING CODE.

TXQ504C4



PAIR OF PHOTOCELLS

in class 3 with adjustable lens, range 10m.

CDR999



LED WARNING LIGHT

24V - 230V with an in-built aerial

ICON



10-METRE WIRING CABLE

with end sleeves.

CABPC10



INTERNATIONAL WARNING SIGN

in PP, multi-language.

TARGA-INT



COMPLETE UNDERGROUND AUTOMATION KIT FOR SWING GATES



KT-HLXCORE24T



PACKING
DIMENSIONS: 400 x 400 x 600
GROSS WEIGHT: 62,9 kg
ITEMS PER PALLET: 5 pcs

USE

Particularly suited for installation that do not allow column installations or where the automation has to be completely hidden. For gates with a maximum length of **3m**, maximum weight **350kg**.

2 SELF-LOCKING ELECTROMECHANICAL GEARED MOTORS

with an encoder-controlled 24V motor.

24V

3m
max

350
kg

HLXCORE24



ELECTRONIC PROGRAMMER

for two 24V encoder-controlled motors complete with speed regulation and deceleration.

T624



2-CHANNEL RECEIVER CARD

433MHz open collector, slot-in card.

S508 - S449 - S486 and EDGE versions are available on request.

RSQ5040C2



2 4-CHANNEL TRANSMITTERS

433MHz FM ROLLING CODE.

TXQ504C4



PAIR OF SURFACE-MOUNT PHOTOELECTRIC CELLS

with adjustable lens, range 25m.

VED0180



LED WARNING LIGHT

24V - 230V with an in-built aerial

ICON



INTERNATIONAL WARNING SIGN

in PP, multi-language.

TARGA-INT



COMPLETE UNDERGROUND AUTOMATION KIT FOR SWING GATES



KT-HLXCORE230T



PACKING
DIMENSIONS: 400 x 400 x 600
GROSS WEIGHT: 65,1 kg
ITEMS PER PALLET: 5 pcs

USE

Particularly suited for installation that do not allow column installations or where the automation has to be completely hidden. For gates with a maximum length of **3m**, maximum weight **550kg**.

2 SELF-LOCKING ELECTROMECHANICAL GEARED MOTORS

with a 230V motor. Supplied with a 6m connection cable.



HLXCORE230



ELECTRONIC PROGRAMMER

for two 230V encoder-controlled motors complete with speed regulation and deceleration.

T600



2-CHANNEL RECEIVER CARD

433MHz open collector, slot-in card.

S508 - S449 - S486 and EDGE versions are available on request.

RSQ5040C2



2 4-CHANNEL TRANSMITTERS

433MHz FM ROLLING CODE.

TXQ504C4



PAIR OF SURFACE-MOUNT PHOTOELECTRIC CELLS

with adjustable lens, range 25m.

VED0180



LED WARNING LIGHT

24V - 230V with an in-built aerial

ICON



INTERNATIONAL WARNING SIGN

in PP, multi-language.

TARGA-INT

