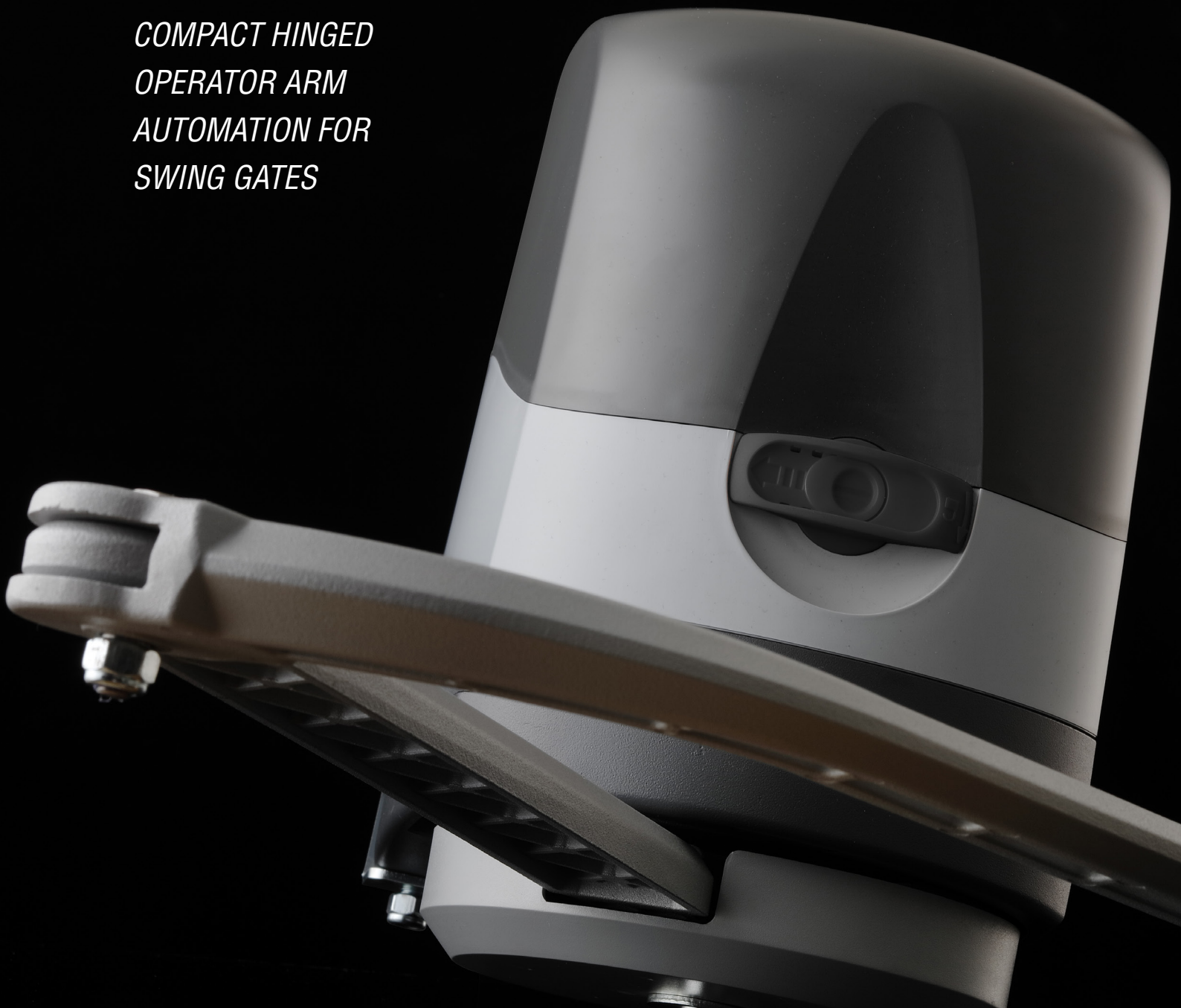


BL *Griffe*

HIDDEN CLAWS, SHARP STYLE

*COMPACT HINGED
OPERATOR ARM
AUTOMATION FOR
SWING GATES*



BL *Griffe*

CARDIN AUTOMATION SERIES BLGRIFFE

Hinged operator arm automation designed to handle swing gates with one or two gate leaves. Includes a master unit with an in-built electronic programmer and a slave unit powering the second swing-to gate, both acting in synch.

Perfect for residential applications with small gates and narrow columns, it fits seamlessly into the fixed structure with-out altering the appearance of the gate and is the ideal choice for effective and reliable gate control, ensuring safety and convenience in any situation - a perfect combination of technology, design and precision.

The compact and robust fastening bracket allows the automation to be fitted to very narrow columns. The extremely robust cast aluminium operator arms are fitted with joints for all applications and are able to drive hinged gates with different constructive characteristics.

Manual release is carried out using a practical locking - unlocking lever protected by a security key.

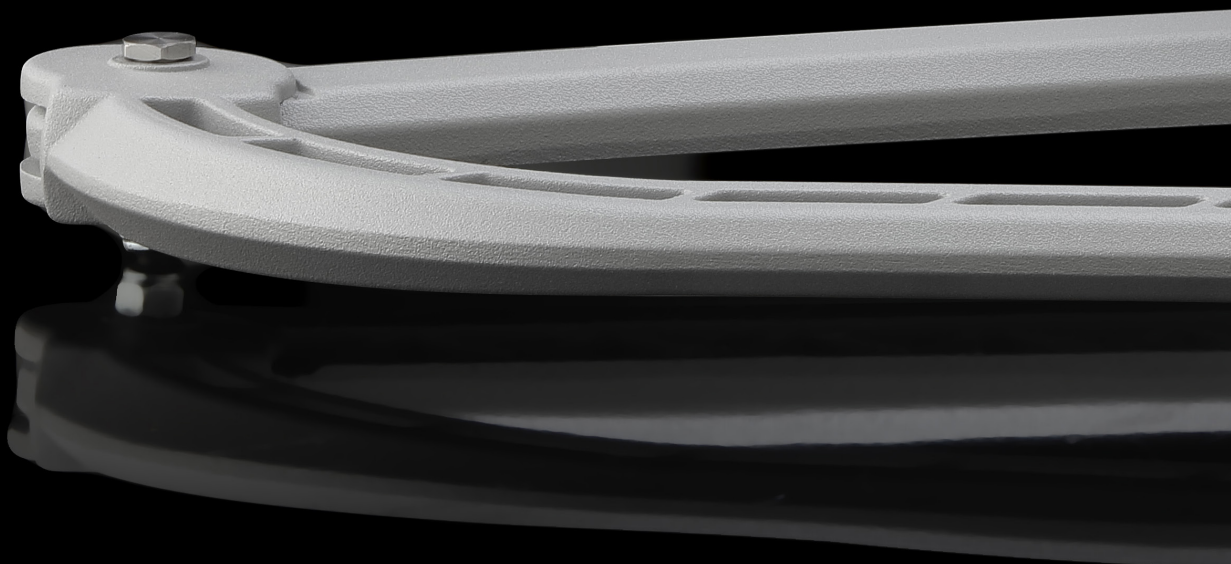
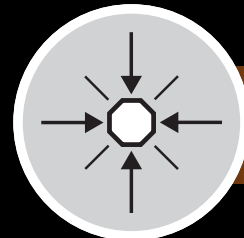
The use of direct current motors increases the performance, guarantees high efficiency, long life and silent running.

The integrated programmer employs mechanical travel limit controlled gate positioning.

Repositioning takes place automatically whenever foreign objects get in the way of the gate as it is moving. The elec-tronic control unit is completed by the anti-crush and "soft start" and "soft stop" functions.

Compatible with the INTPRG-3G/WF system that allows the monitoring and programming of system parameters from re-mote positions.

Kit including battery charger and batteries to be ordered separately.



COMPACT SIZE

IDEAL FOR GATES WHERE THE
HINGES DO NOT ALIGN WITH
THE COLUMN'S EDGE

PERFECT FOR RESIDENTIAL
APPLICATIONS



MASTER UNITS COMPARED

ELECTROMECHANICAL UNIT WITH A 24V MOTOR

Encoder-controlled self-locking Master unit including:

- electronic programmer;
- 433MHz FM receiver;

Particularly suited for installations with narrow columns that require the mounting base to be less than 180mm in width and also for gates where the hinges are not aligned to the edge of the column and with gate leaves of up to 2 metres in length (2,5m with a hinged arm and an electric lock) 200kg maximum weight.

Operator arm included.

The electronic programmer is factory fitted with a graphic LCD display (128 x 128 pixels) with backlighting in six different languages. The menu allows you to rapidly set the system parameters including: the sequential button mode, automatic reclosing, warning lamp pre-flashing, intermittent warning lamp activation, indicator light and photoelectric cell function setting etc. The electronics card, thanks to the presence of the real-time clock, allows you to set 10 events (shown on the display) and these events permit you to regulate the opening and closing of the motor at different times during the day within 3 weekly time bands (Mon-Fri, Sat-Sun, Mon-Sun); the events can be enabled or disabled (during holiday periods) either from the menu or by means of a radio channel.

This version of the product is factory fitted with a multi-decoding remote control module (system S449 - S486 - S504 - S508).

By default the devices are supplied with a 433MHz RF module and the S504 / S508 series memory module inserted. To control the device with S449 transmitters, insert the ZGB24LC16-I / P memory module (supplied with the device) and consult the relevant section. For the S508 / S486 series purchase and insert the 868Mhz RF module.

BLGRIFFE24M



ELECTROMECHANICAL UNIT WITH A 24V MOTOR

Self-locking Master unit controlled by mechanical travel limits with an in-built electronic programmer.

Kit battery charger + batteries to be ordered separately.

Particularly suited for installations with narrow columns that require the mounting base to be less than 180mm in width and also for gates where the hinges are not aligned to the edge of the column and with gate leaves of up to 2 metres in length (2,5m with an electric lock), 200kg maximum weight.

Operator arm included..

Simple and intuitive electronic programmer where basic functions are configurable via dip-switches.

It can also be configured via the CRD TWO app by installing the optional MODBT2 module, which enables more advanced functions.

Factory set for the insertion of an open collector receiver card that guarantees compatibility with all the radio control series available in the Cardin catalogue.

A simplified installation may be set up with a deactivated encoder.

BLGRIFFE24TM



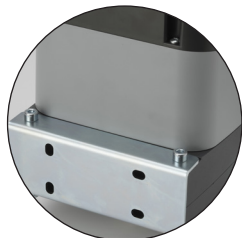
TECHNICAL DATA



BLGRIFFE TRAVEL LIMITS



ALUMINIUM OPERATOR ARMS



ANCHOR PLATE



MANUAL RELEASE MECHANISM
WITH A PERSONALISED KEY



SELF-PROGRAMMING MONITORED
BY AN LCD GRAPHICS DISPLAY

Operator arm technical specifications	
Motor power supply	
Nominal electrical input	
Power input	
Duty cycle	
Opening time 90°	
Maximum opening angle	
Max. torque	
Protection grade	

Electronic programmer technical data	
Power supply	
Nominal electrical input	
Maximum power yield	
Power output for 1 or 2 motors	

	24M	24TM
Vdc	24	24
A	2	2
W	50	50
%	70	70
s	16	16
°	120	120
Nm	250	250
IP	54	54

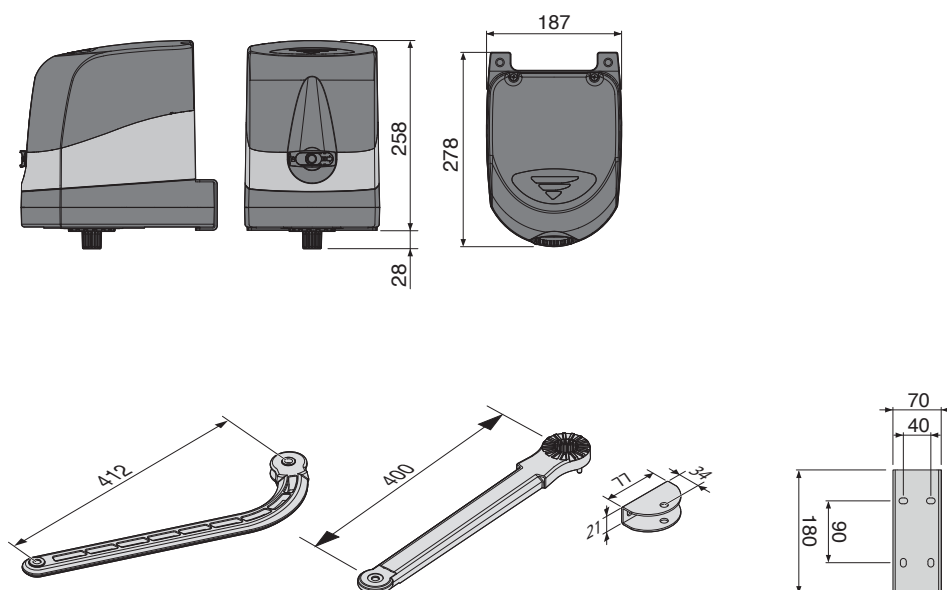
	24M	24TM
Vac	230	230
A	0,8	0,7
W	180	150
W	70 + 70	60 + 60



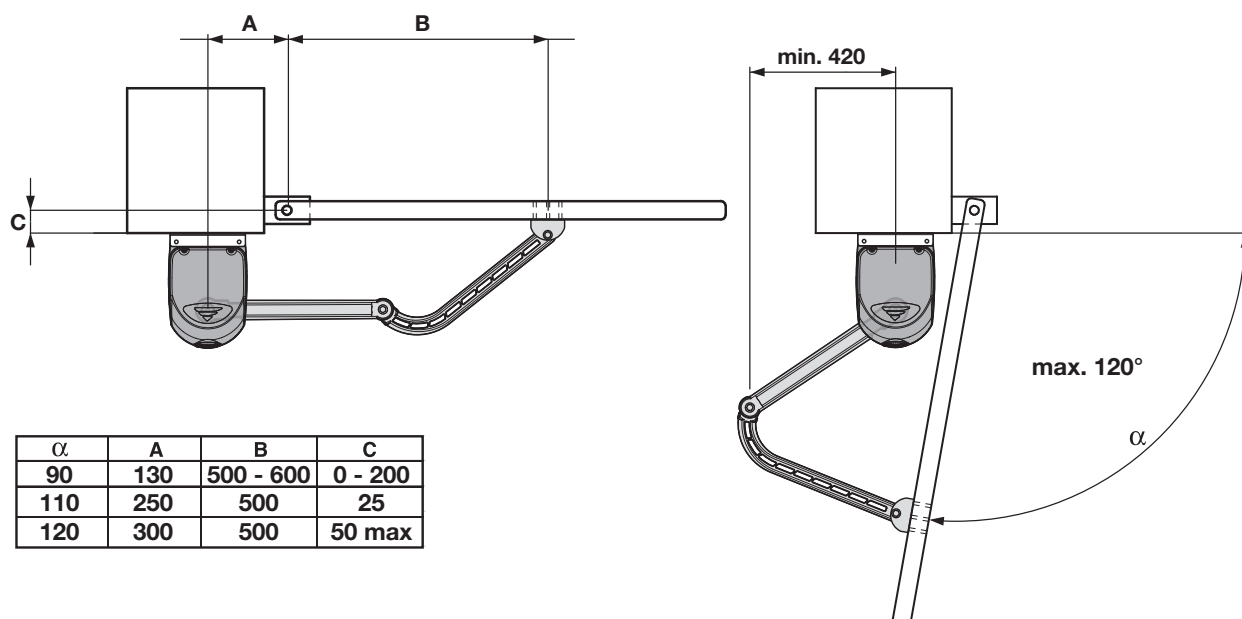


OVERALL DIMENSIONS

SERIES BLGRIFFE OVERALL DIMENSIONS (mm)



BLGRIFFE HINGED ARM (mm)



KIT & INSTALLATION



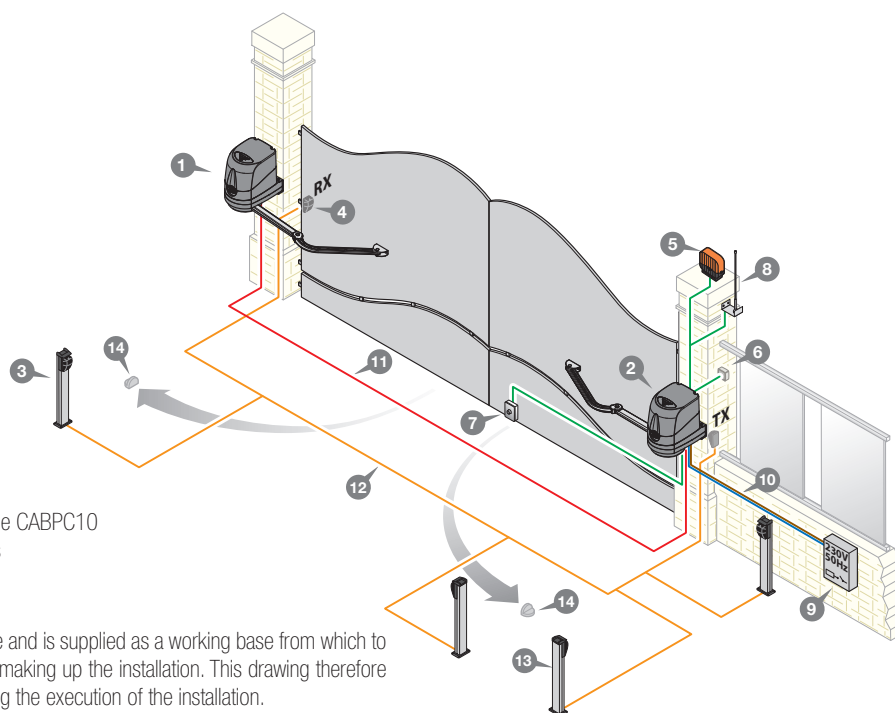
KIT BLGRIFFE24M	KIT BLGRIFFE24TM
BLGRIFFE24M	BLGRIFFE24TM
BLGRIFFE24S	BLGRIFFE24S
TXQ504C4 x2	TXQ504C4 x2
CDR999 x2	RSQ5040C2
ICON	ICON
CABPC10	VED0180 x2
TARGA-INT	TARGA-INT

INSTALLATION EXAMPLE

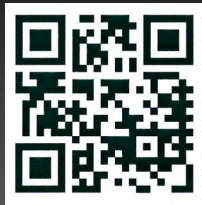
LEGEND

- 1 Geared motor (left)
- 2 Geared motor (right)
- 3 Internal photocells
- 4 External photocells
- 5 Warning lights
- 6 Mechanical selector switch
- 7 Electric lock
- 8 External aerial
- 9 All pole circuit breaker
- 10 Mains cable 230Vac
- 11 Channelling for Cardin connection cable CABPC10
- 12 Channelling route for low voltage wires
- 13 Lateral protective photocells
- 14 Opening direction stop buffers

Attention: The drawing is purely indicative and is supplied as a working base from which to choose the Cardin electronic components making up the installation. This drawing therefore does not lay down any obligations regarding the execution of the installation.



***BL** Griffe*



CONCEIVED IN CARDIN



www.cardin.it

